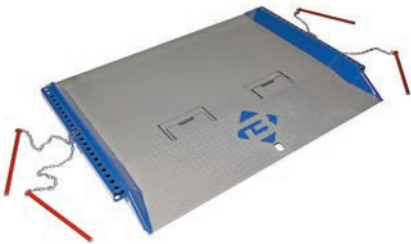
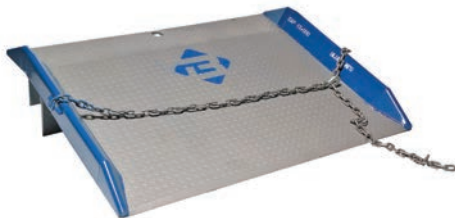




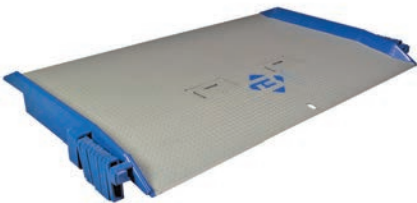
1. STEEL DOCK BOARD (Model T)



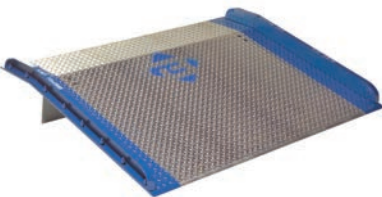
2. STEEL RED PIN DOCK BOARD (Model C)



3. STEEL DOCK BOARD (Model TNB)



4. STEEL RAIL BOARD (Model R)



5. ALUMINUM DOCK BOARD (Model AC-BC)

1. **Model T:** Two four-hole pin pockets, lifting loops, double bend design. Capacities: 15-40K lbs.

2. **Model C:** Dual pin locking system for difficult trailer-to-dock positioning. Capacities: 15-40K lbs.

3. **Model TNB:** Single bend design with lifting chains and full-length locking legs. Capacities: 15-40K lbs.

4. **Model R:** Heavy-duty locking rings for safe, secure positioning. Lifting loops, Box structure for strength and safety. Speedy Board option available. Capacities: 15-90K lbs.

5. **Model AC-BC:** Full-length structural steel bolt-on legs. Low cost solution for light, non-powered activity applications. Capacities from 10-15K lbs.

6. **Model SC:** All-welded steel board with fixed lock legs for low- to medium-capacity use. Notch design on leading edge of board allows the forklift driver to move, set in place, and retrieve the board without exiting the forklift cage. Capacities: 10-13K lbs.

7. **Model SB:** Allows forklift driver to move, set in place, and retrieve dock boards without leaving safety of lift cage. Capacities: 10, 13, & 15K lbs.

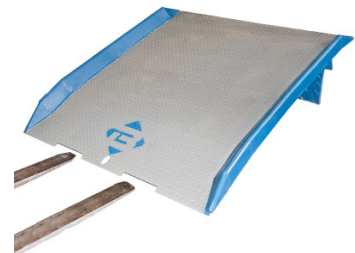
8. **Model ATD:** All welded aluminum construction. Capacities from 10 to 15K lbs.

9. **Model SL:** Top-of-dock mounted, vertically stored board with dual spring lift assist. Recommended for loading applications involving hand trucks/dollies and pallet jacks.

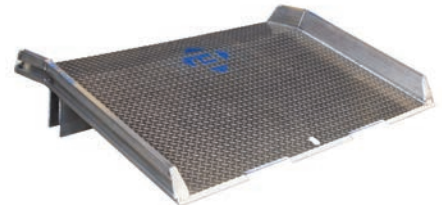
10. **Model A-B:** Low-cost solution for light, non-powered applications. Available in two capacity ranges.



6. STEEL DOCK BOARD (Model SC) WITH SPEEDY BOARD® OPTION



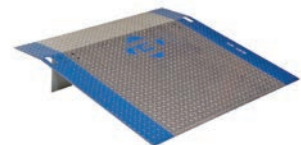
7. SPEEDY BOARD® (Model SB)



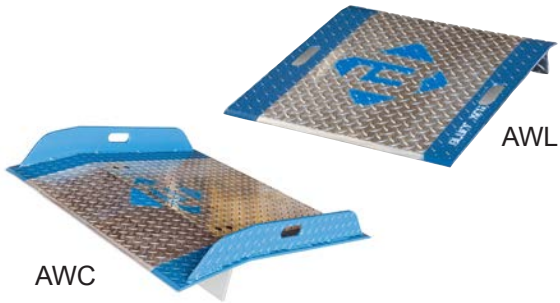
8. ALUMINUM DOCK BOARD (Model ATD)



9. ALUMINUM SPRING LOADED PLATE (Model SL) Patent No. D633,684



10. ALUMINUM DOCK PLATE (Model A-B)



ALUMINUM PLATES FOR GAS CYLINDERS (Models AWL & AWC)

Designed for the safe transport and distribution of industrial, medical and specialty gases on and off pallets. Light enough to be moved by hand yet strong enough to hold heavy cylinders, AWL and AWC are perfect for manually maneuvering cylinders with ease and control, reducing risk of damage and injury. Not for use with powered vehicles.



SP

STEEL PLATFORM (Model SP)

A fast, economical way to expand your dock area and increase freight handling capabilities.



CR

CONTAINER RAMP (Model CR)

Assists in safe navigation from ground to container. Full-width stiffener, locking chains, and lifting loops. Capacities: 15-20K lbs.



YRA

STEEL YARD RAMP (Model YRA)

All-welded steel construction with capacities from 16,000 lbs. to 90,000 lbs. Wide range of capacities and sizes available. Double-action hydraulic pump. Solid rubber tires standard, pneumatic tires optional. Available without undercarriage for permanent placement.



MR

MINI RAMP (Model MR)

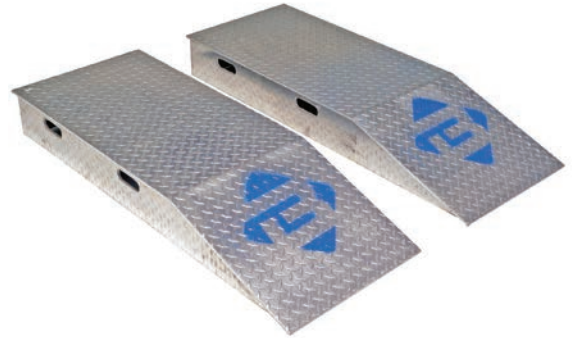
Serves heights from 16" to 32". Optional mobility package available (pictured above).



WR

WALK RAMP (Model WR)

Strong, lightweight aluminum construction makes ramps easily portable and convenient. For foot traffic only. Available in Hook Model or Apron Model (pictured above).

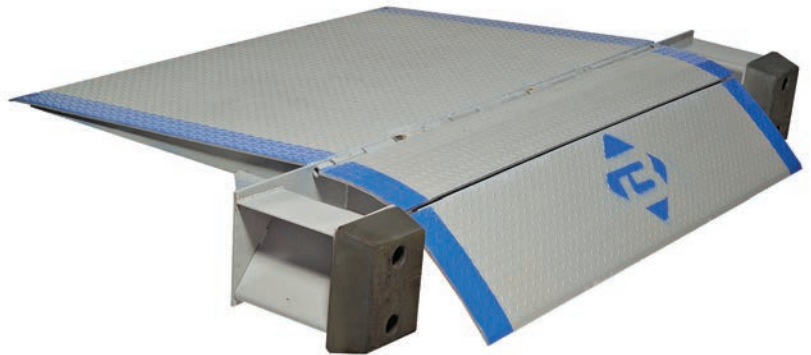
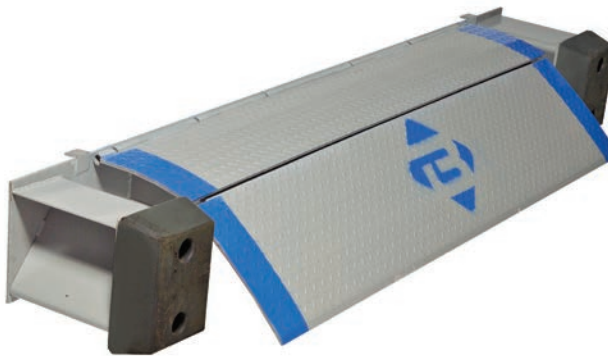


STEEL WHEEL RISERS (Model SWR)

Position trailers properly above dock for more efficient loading. Lengths to accommodate single, dual or tandem axle trailers. Widths of 18" and 24". Custom sizes available. Tabs for anchoring

ALUMINUM WHEEL RISERS (Model AWR)

Position trailers properly above dock for more efficient loading. Lengths to accommodate single, dual or tandem axle trailers. Widths of 18" and 24". Custom sizes available. Hand holds for easy moving

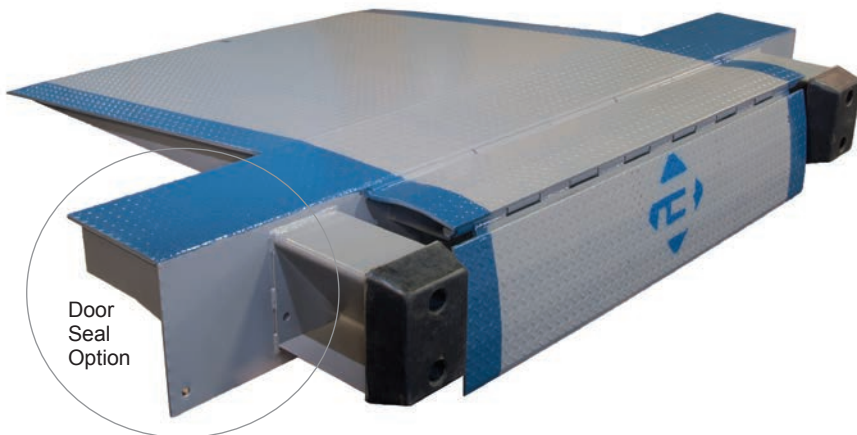


EDGE-OF-DOCK LEVELER (Model EP)

Automatically returns to stored position when truck leaves. Self-storing handle. Bumper and blocks included. Capacities from 20,000 to 25,000 lbs. Refrigerated lip and hydraulic operating system are optional.

LO-DOCK LEVELER (Model LD)

Raises Edge-of-Dock Levelers to proper working height. Easily installed on any concrete dock without welding or modifications. Working range of 5" up or 5" down. Refrigerated lip and hydraulic operating system are optional.



Door Seal Option



CURB RAMP (Model CURB)

Provide a safe and ergonomically correct method to move heavy loads over curbs or up steps with ease. Lightweight ramp has two handles with rounded edges for easy pickup, carrying and handling.

LO-DOCK LEVELER WITH DOOR SEAL OPTION (Model LD)

CRASH GUARD™ SAFETY BARRIERS

Improve plant and warehouse safety by reducing the costs associated with employee injury, machinery down-time, insurance claims and building repairs due to accidental collisions.



TUFF GUARD SAFETY RAIL (Model TGR/TGP)

4" x 4" x 3/16" structural steel square tubing posts. 8" square base plates manufactured with 5/8" thick steel. Formed 10 gauge steel rails in lengths up to 12'. Standard post heights: 18" and 42". Hardware included.

DOOR TRACK GUARD

Model DG

Protect overhead door tracks from damage. Wrap-around track design allows for free door operation. Columns are 3/16" thick steel with a 1/2" x 10" x 10" steel base plate with three 5/8" holes. Can be bolted to floor and wall (fasteners not included). 1/2" anchors recommended.

DG48-3

A smaller lighter option, model DG48-3, allows for a tighter fit around columns. It has a steel base plate that is 1/4" x 6" x 6" with three 5/8" holes (fasteners not included). 1/2" anchors recommended. DG48-3 can also be used as corner protectors.



DG48-3 DG



MODULAR PROTECTIVE BARRIER (Model MPB)

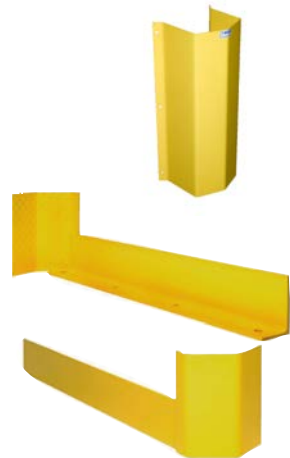
Lift-out rail design allows access to areas quickly and safely. Simple to install or cut custom sizes in the field. Available in 20" single or 42" double post design with guard rail lengths up to 10'. 42" double rail meets OSHA guidelines for rail protectors. Installation hardware not included. 1/2" anchors recommended.

PIPE GUARD (Model PG)

Designed to eliminate damage to plumbing, mechanical and electrical equipment mounted to building columns and facility walls. Wall-mount and column-mount styles available. Fasteners not included.

RACK GUARD (Model RG)

Wrap-around feature protects rack from front and aisle damage. Heavy duty design bolts to floor for extra stability. Installation hardware not included. Hardware kits available upon request (1/2" anchors).



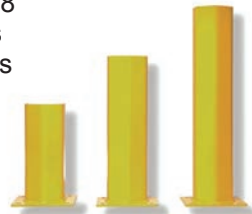
MACHINE GUARD (Model MG)

Fully welded unit creates barriers between traffic areas and valuable machinery. Available in heights of 10", 24", and 42". Quick and easy installation. 4" square steel tubing has 1/2" x 8" x 8" base plates. 5" square steel tubing has 1/2" x 10" x 10" base plates.



BOLLARD (Model SRB)

Protects personnel and machinery. Simply bolt into position—no concrete work required. 6" I.D. sch 40 pipe, 42" high. 10" x 10" x 5/8" base with 3/4" mount holes. Black plastic cap. 5/8" anchors provided.



POST PROTECTORS (Model PO)

Various thickness protection available in 1/4", 3/8", and 1/2". Available heights: 12", 18", and 24". Standard models fit around rack posts up to 4" wide. Base plates have four 9/16" mounting holes. Fasteners not included. 1/2" anchors recommended.



BOLT-ON POST PROTECTOR (Model CP)

Designed with increased aisle space in mind. It bolts directly to a column for additional column reinforcement and is perfect for reinforcing damaged posts. 42" is standard height, but any height is available. Easily installed (no anchoring necessary).



BOLT-ON BULLNOSE POST PROTECTORS (Model CPBN)

Tapered design protects rack posts from costly damage from warehouse vehicles. Bolts directly to column for easy installation (floor anchors optional). Available in either 24" or 42" heights with 1/4" thickness for optimum column protection.



MEZZANINES

Move up, not out with Bluff Mezzanines. Maximize floor space in your facility without incurring the cost of construction, land acquisition, increased property taxes and insurance premiums. Bluff Mezzanines are free-standing, prefabricated structures that require no on-site welding. The non-welded bolt connections and flexibility of design allow for future modifications, relocation and/or expansion and potential reconfiguration.

CONVEYOR CROSSOVERS

Bluff's goal is to provide you with conveyor crossover solutions which maximize the efficiency of your operations and minimize the costly potential of injury by keeping your personnel safe.



STAIRWAYS

Stairways can be integrated into your existing installation or can be a new, freestanding installation. Manufactured with structural steel and feature a bolt together design for maximum strength and rigidity. All stairways systems are IBC, UBS and OSHA compliant.

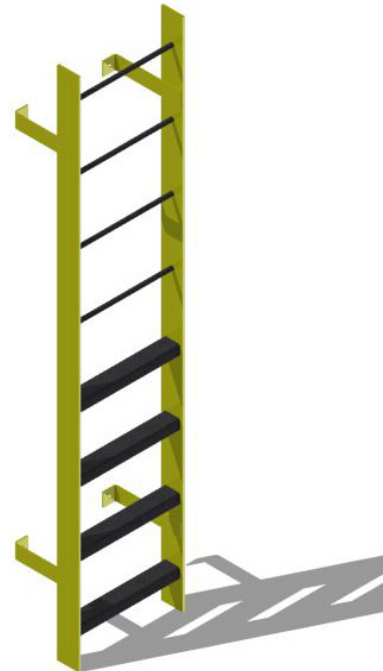
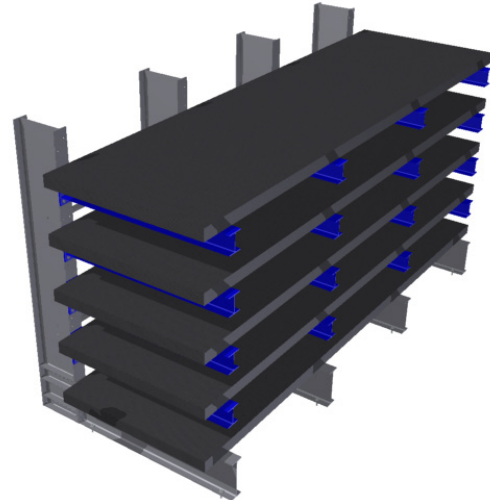
LANDINGS

If you have a vertical rise exceeding 12 feet, you must have an intermediate landing. Bluff will actively work with you to design and develop the most functional and efficient stair system possible within your space constraints. Landings can be provided with stairs or sold separately.



CANTILEVER RACK

Cantilever racks are the racking system of choice for the orderly storage of large, bulky items with a wide range of lengths and size proportions. The horizontal load carrying arms of the cantilever system extend outward from a single column and provide full horizontal access with no lost storage space due to rack structure. Abundant handling clearance enhances retrieval efficiency and minimizes potential damage often caused by horizontal or vertical obstructions.



LADDERS

Ladder design applications include simple fixed ladders, caged and uncaged ladders, crossover ladders and ships ladders. All Bluff ladders are designed and constructed in compliance with OSHA and ANSI Standards.