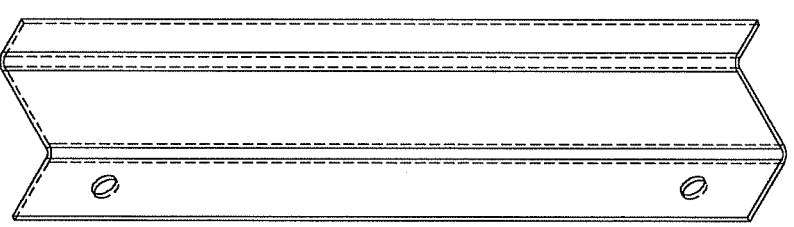
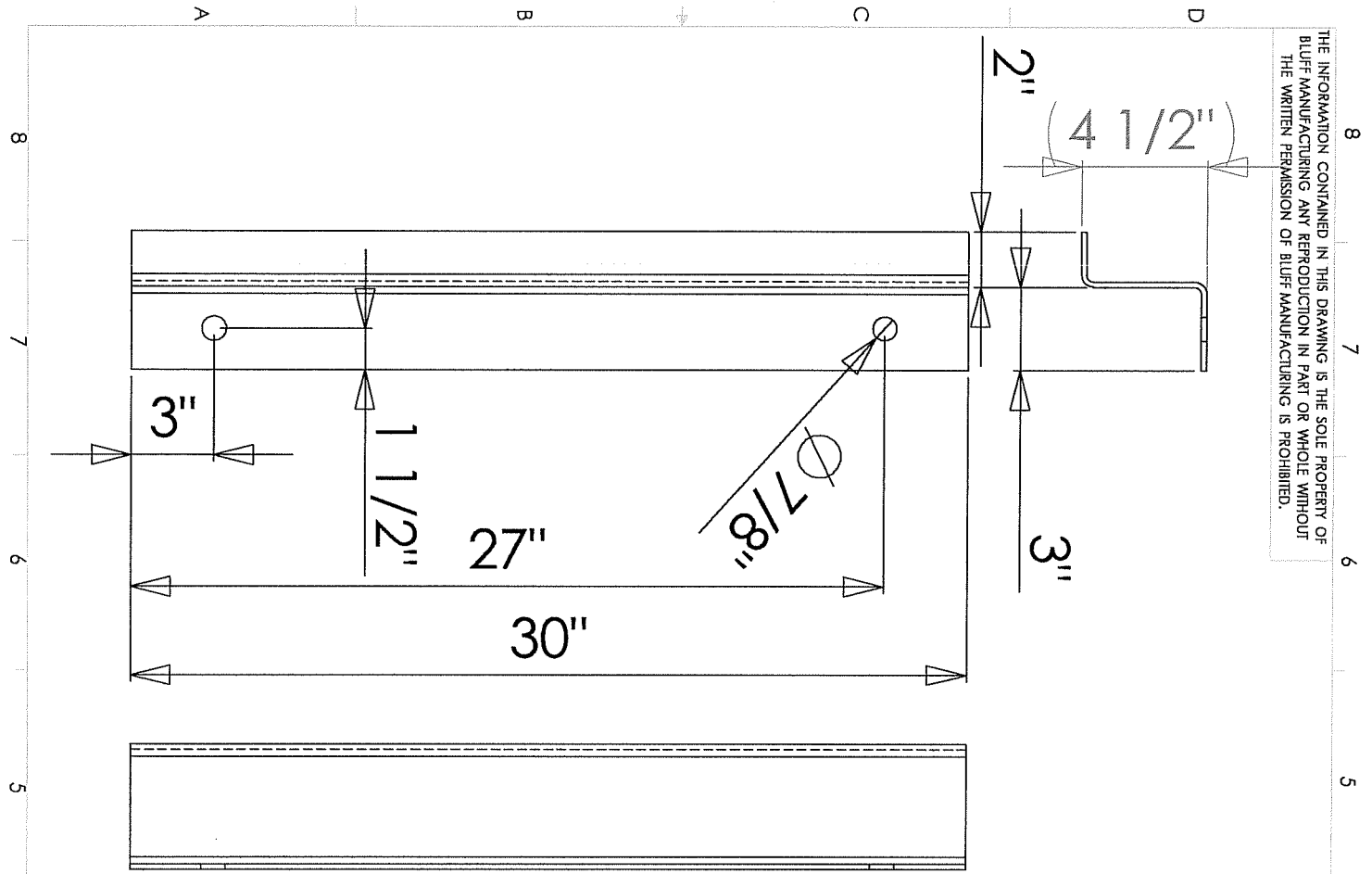


THE INFORMATION CONTAINED IN THIS DRAWING IS THE SOLE PROPERTY OF BLUFF MANUFACTURING. ANY REPRODUCTION IN PART OR WHOLE WITHOUT THE WRITTEN PERMISSION OF BLUFF MANUFACTURING IS PROHIBITED.



PREFER HOLE LOCATIONS EQUI-DISTANT FROM EACH END OF GUARD. UNIFORMITY ALLOWS USE AS RIGHT HAND OR LEFT HAND.

REV.	REVISIONS DESCRIPTION	DATE/APPROVED

UNLESS OTHERWISE SPECIFIED DIMENSIONS ARE IN INCHES TOLERANCES ARE: FRACTIONS DECIMALS ANGLES + 1/16 XX+ .25 + 1/2 XXX+.062		CAD GENERATED DRAWING. DO NOT MANUALLY UPDATE	
MATERIAL: 3/16" A36 SSP	RESP ENG: JMKEY 13MAY05	APPROVALS	DATE
FINISH: SAFETY YELLOW POWDER COAT	DO NOT SCALE DRAWING	DRAWN: JMKEY 13MAY05	CHECKED: JMKEY 13MAY05
MFG ENG: JMKEY 13MAY05		QUAL ENG: JMKEY 13MAY05	
SCALE: A		DWG. NO.: DG30NB-2	
SHEET 1 OF 1		CAD FILE:	
<p><b>BLUFF MANUFACTURING, INC.</b>          9201 S. FREEWAY          FORT WORTH, TX 76140          800-433-2212</p> <p><b>CUSTOM DOOR GUARD</b></p>			