

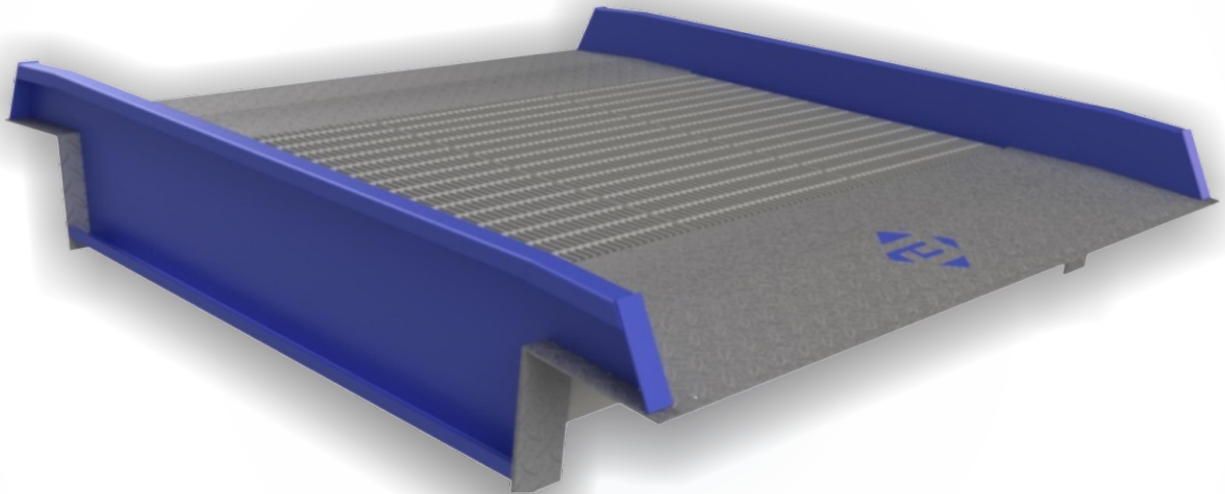
Steel Crossover Bridge - Model COB

*Bridge the gap with
a Bluff Crossover Bridge*

Product Overview

BLUFF
AN INTEGRATED WAREHOUSE SOLUTIONS BRAND

Yard Ramps



BLUFF
AN INTEGRATED WAREHOUSE SOLUTIONS BRAND

Innovative Products
Fast Lead times

Features

- Transition over gaps such as ditches, waterways, uneven topography, or between docks in a warehouse
- All steel welded construction with steel grating
- Standard capacities from 16,000 lbs to 30,000 lbs
- Lengths available up to 50'
- 8" Tall curbs on each side serve as runoff protection
- Worksheet required



Optional Features

- Option for handrails: Handrails are recommended for gap depths of more than 48"
- Fork pockets
- Full steel floor plate designs
- Recessed curb
- Support legs
- Higher capacities and custom designs available

